

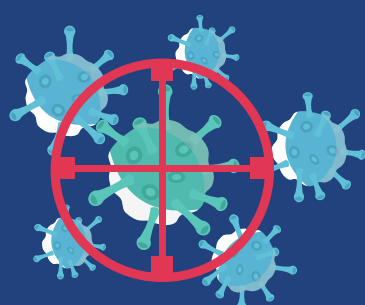
# Returning to work and understanding the risks

## Legionnaires Disease

As the restrictions begin to ease on the Coronavirus lockdown, businesses are faced with new health risks arising from the 'restarting' process.

### Health risks to workers and the public

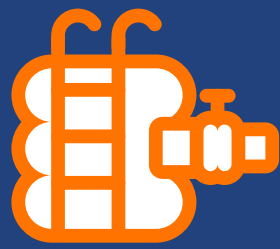
Legionnaires' disease is a risk because of building closures or reduced occupancy during the COVID-19 outbreak. Failing to reduce the risk of Legionnaires' disease from water systems can lead to large fines.



Legionella is a type of bacterium found naturally in freshwater environments, like lakes and streams. It can become a health concern when it grows and spreads in human-made building water systems.

### Affected organisations

- Food production manufactures
- Schools, colleges and universities
- Hotels and restaurants
- Gyms, leisure centers and theme parks
- Rail, bus, tube, trams
- Ports for air and boats



## Protection for workplace health

### Legionella Risk Assessment & Testing

IOM can provide legionella assessments identifying and assessing sources of risk. Preparing a scheme to prevent or control risk. A review of the water systems, awareness training for workers and finally managing and monitoring the precautionary measures.

[www.iom-world.org](http://www.iom-world.org)

Identify. Solve. Deliver.